

## Measurements

The measuring directions included here are for the corset macro. Some of the measurements are different than the ones required for macros created by Leena Lahteenmaki. If you are using the editing software (Deluxe Editor or Home Studio), it is necessary to create a separate measurement table for the Renaissance corset. Some of these measurements seem a bit strange and there are a lot of them. However, a good fit is worth the effort.

Here are some things to remember:

- The model should be wearing appropriate undergarments. It is best not to wear a push-up bra when being measured.
- Tie a ribbon or piece of elastic around the waist and the armscye to help you measure accurately.

•Be aware that some people have a hard time finding where their true waist lies. If your model puts her hands on her hip bones, her waist should be just above her hands. This different from the fashion waist which goes up and down frequently.

Please do not add ease to the raw measurements. You will be asked for waist and bust ease amounts in the program dialog boxes. Waist ease will depend upon the amount of cinching you wish the corset to do. Typically waist ease will be 0 or less. Bust ease will be minus 1" to 2" (-2.5 - to -5cm) depending upon the size of the bust and how much of a "push-up" effect you want. Wearers with a small bust will probably want a bust ease of 0. When in doubt, start with 0, it is always possible to take the corset in.

---

## Front Measurements

**F1 Full Bust Width:** Measure across the fullest part of the bust from side seam to side seam. Generally this is 1 1/2" (4 cm) below the armscye.



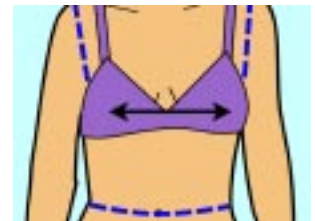
F1 \_\_\_\_\_

**F2 Above Bust Width:** (also called "width of chest") Measure from side seam to side seam across the upper bust.



F2 \_\_\_\_\_

**F3 Apex to Apex:** Measure between the highest points of the bust.



F3 \_\_\_\_\_

**F4 Bust Depth:** Measure from the point where the shoulder seam would meet the base of the neck down to the bust apex.



F4 \_\_\_\_\_

**F5 Neck side to Waist:**

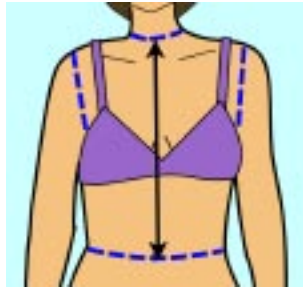
This measurement extends from the side of the neck and shoulder seam to the waistline. (This is a common measurement that is often referred to as “shoulder to waist over bust.”)



F5 \_\_\_\_\_

**F6 Center Front Neck to Waist:**

This measurement starts at the hollow at the base of the neck and extends down the center front to the waist.



F6 \_\_\_\_\_

**F7 Front Across Chest:**

Measure across the front of the chest from armseye to armseye. This line should be 3” (7.5 cm) below the base of the neck.



F7 \_\_\_\_\_

**F8 Shoulder Slope:**

Measure from the end of the shoulder (the bone that forms the top of the shoulder is a good reference point) to the center front of the waist.



F8 \_\_\_\_\_

**F9 Across Shoulders:**

Measure from one shoulder across the front to the other.



F9 \_\_\_\_\_

**F10 Full Side Length:**

Measure from the shoulder seam at the armseye to 4” (10 cm) around the armseye and down the side seam at the waistline.



F10 \_\_\_\_\_

**F11 Waist, front:**

Measure from side seam to side seam along the waist.



F11 \_\_\_\_\_

# Back Measurements

**B1 Full Back Width:** Measure across the back **from side seam to side seam** directly below the armhole.



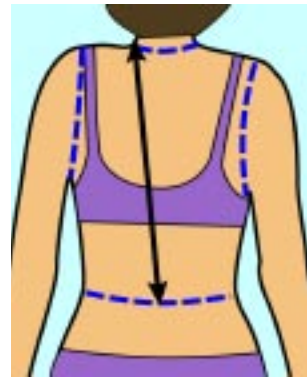
B1 \_\_\_\_\_

**B5 Shoulder Slope:** Measure from the end of the shoulder at the armhole down to the center back of the waist.



B5 \_\_\_\_\_

**B2 Side Neck to Waist:** Measure from the side of the neck and shoulder seam down to the waistline at the center back point.



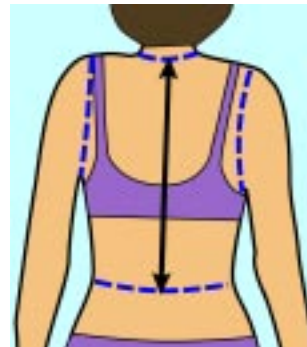
B2 \_\_\_\_\_

**B6 Across Shoulders:** Measure from where the shoulder seam meets the armhole (or at the bone that marks the top of the shoulder). Measure to the same point on the other shoulder.



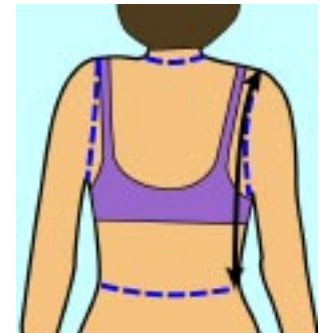
B6 \_\_\_\_\_

**B3 Center Back, neck to waist:** Measure from the base of the neck (there is a lumpy bone there) at the center back down to the waist.



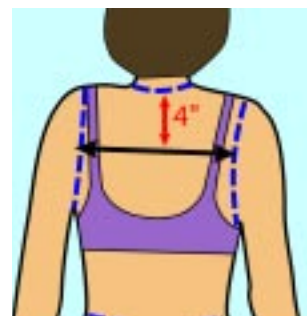
B3 \_\_\_\_\_

**B7 Full Side Length:** Measure from the shoulder seam at the armhole 4" around the armhole and down to the side seam at the waistline.



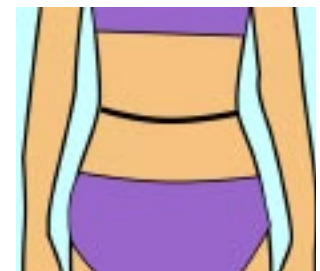
B7 \_\_\_\_\_

**B4 Across Back:** Measure across the back from armhole to armhole at 4" (10 cm) below the base of the neck.



B4 \_\_\_\_\_

**B8 Back Waist:** Measure the waist from side seam to side seam.



B8 \_\_\_\_\_

## Full Torso Measurements

### FB1 Shoulder Length:

Measure from where the base of the neck intersects with the shoulder seam out to the shoulder point (where the arm-  
scye meets the shoulder seam).



FB1 \_\_\_\_\_

**FB2 Side Seam:** Measure from the arm-  
scye to waist at the side seam.



F2 \_\_\_\_\_

**FB3 Underbust:** Measure under the bust where your bra elastic sits.



FB3 \_\_\_\_\_

## Sleeve Measurement

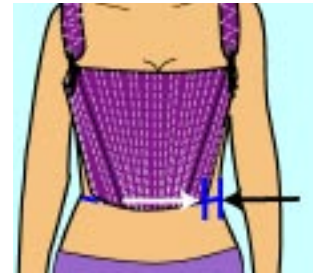
**S1 Shoulder to wrist:** with the arm bent, measure from the shoulder bone to the wrist bone around the outside of the bent arm.



S1 \_\_\_\_\_

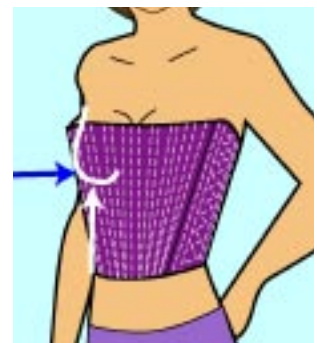
## Additional Measurements

**FB4 Waist Ease:** This is the amount of waist cinching you would like. Enter a negative number from 0 to -2" (5 cm). When in doubt, use 0. It is easier to take the corset in if it is too loose than to let it out. Remember that your corset is likely to stretch as it is worn.



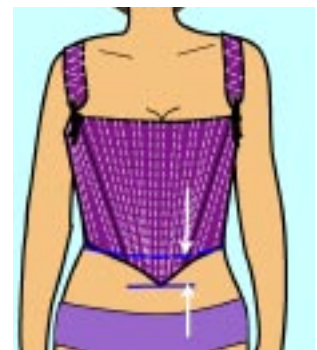
FB4 Waist Ease: \_\_\_\_\_

**FB5 Bust Ease:** When the corset is taken in slightly at the point where the bosom naturally sits, it will push the bust upward. The more it is taken in, the more it will push up. Bust ease will be minus 1/2" to 2" (1 - 5 cm) for those with a larger bosom. Wearers with a small bust will probably want a bust ease of 0 or -1/2" (1.25 cm). When in doubt, select 0.



FB5 Bust Ease: \_\_\_\_\_

**Point Depth:** This is the distance from the waist to the corset point. This option is only available on the elongated front corset.



Point Depth: \_\_\_\_\_

→Reversible Corset: stitch the backs to the side fronts and the straps to the back at this time as well. Skip to steps 5 and 6 to stitch the center back. Then return to steps 3 and 4 to mark and stitch the boning channels. Trim all of the seam allowances down to reduce the bulk before stitching the channels.

### 3. Bone placement.

Place the bones in the desired pattern on the inside front piece. Trace around the bones using a pencil or water erasable marker. Remember that the layout shown here is just a suggestion. You can place the bones in whatever arrangement suits you best.

Note: The bones do not need to be cut to the correct length yet.

### 4. Stitch channels.

Place the front pieces wrong sides together and machine or hand baste the layers together. Stitch along the traced lines to create the bone channels. It is a good idea to stitch slightly wider than the traced lines to be sure the channels will be wide enough for the bones. It doesn't hurt to check the width of your channels by sliding a bone into place.

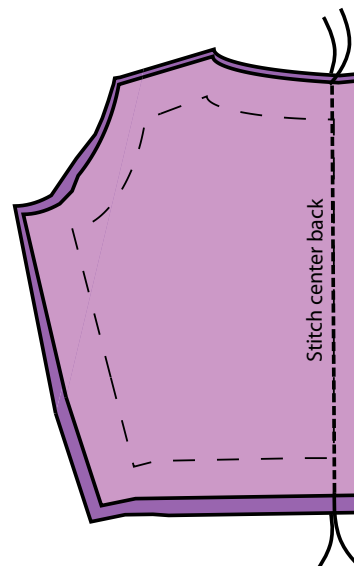
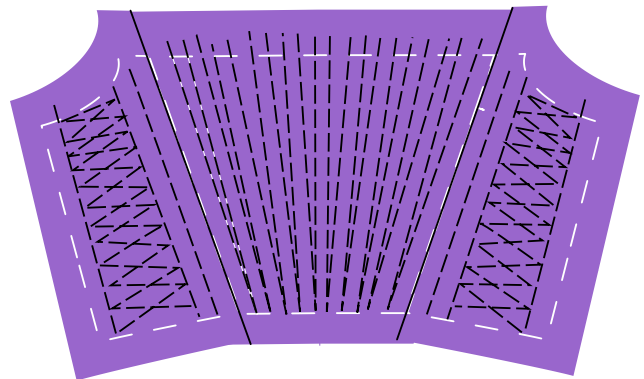
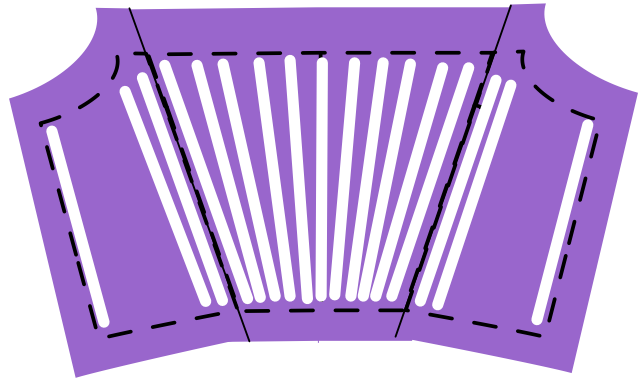
Quilt the areas that do not contain bones with a straight stitch in a zigzag pattern.

### 5. Stitch center back.

Place the left back pieces right sides together and stitch along the center back seam.

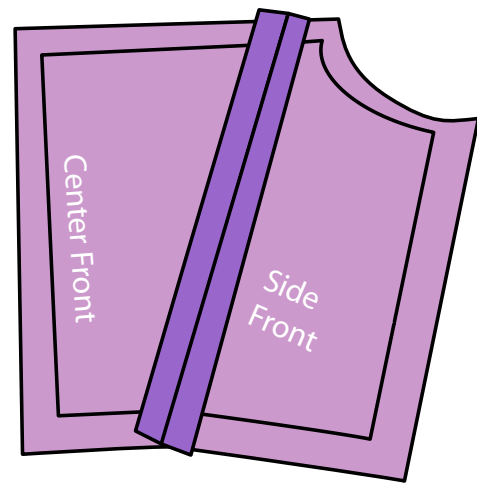
Trim the seam allowance to 1/4" - 3/8" (1 cm). Repeat with the right back pieces.

→Reversible Corset: skip to steps 7 and 8 to mark and stitch the back bone placement.

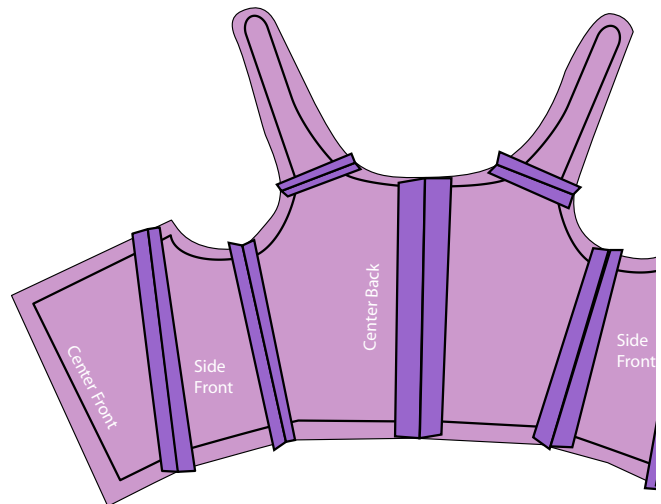


## 2. Stitch backs to sides.

Pin and stitch the fronts to the backs at the sides. It is a good idea to back stitch where the seam line crosses the waistline and the neckline. Then back stitch again at the edge of the fabric.



→Reversible corset: Stitch the side seams and backs as well. If your corset will have straps, stitch those on as well.

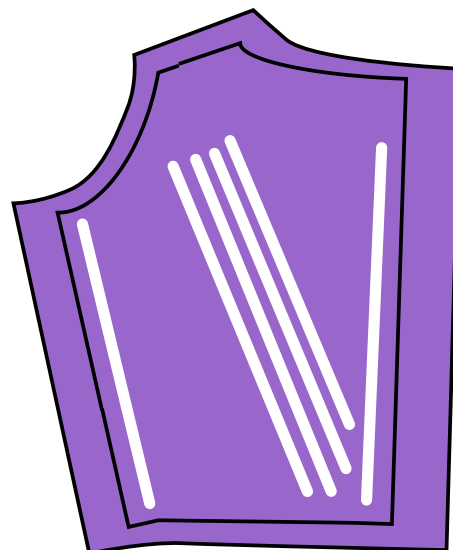


*Above: stitch the fronts, side fronts, backs and straps (optional) together for the reversible corset.*

## 3. Back bone placement.

Place the bones in the desired pattern on the right side of the “inside” back pieces. Trace around the bones using a pencil or water erasable marker. Remember that the layout shown here is just a suggestion. You can place the bones in whatever arrangement suits you best.

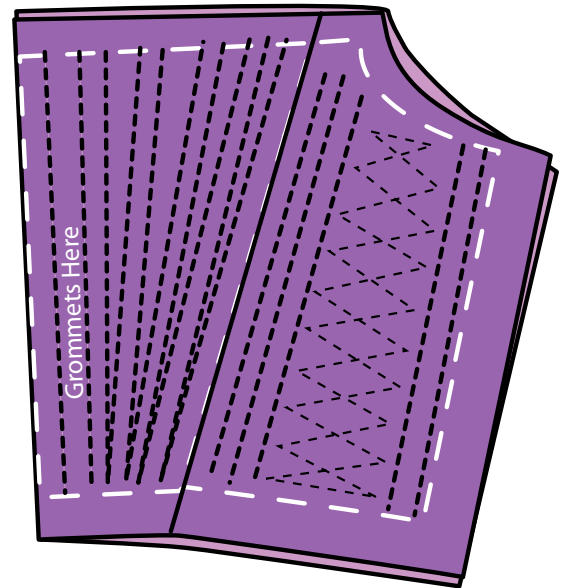
Note: The bones do not need to be cut to the correct length yet.



## 8. Stitch front bone channels.

Pin and stitch the two layers together along the traced lines to create the bone channels.

Quilt the areas that do not contain bones.



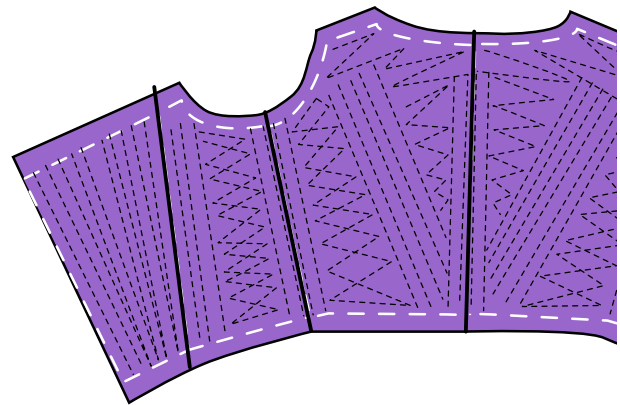
## 9. Stitch the side seams.

Pin and stitch the side seams through all layers.

**Tip:** If you would like a corset that is easy to alter, do not stitch the side seams until you have bound or piped the waist and neckline edges.

## 10. Fit the corset.

At this time, it might be wise to slide the bones into the channels and fit the corset. Let any excess bone length stick out the top or bottom. You can adjust the neckline, waist, side seam, or center back seams as you desire.



## 11. Mark the bones.

Number each bone and write the corresponding number in the seam allowance of the corset to save time when putting the bones into the corset.

If your bones are too long it is possible to cut them shorter. This is a more expensive option than ordering bones that are the correct length as it is necessary to purchase bone dip as well. Lay the bones on the corset and use a permanent marker to mark the length of each bone. Be sure that the final length will be  $\frac{3}{8}$ " (1 cm) shorter than the finish line of the corset at each end for a total of  $\frac{3}{4}$ " (2 cm) shorter.

